

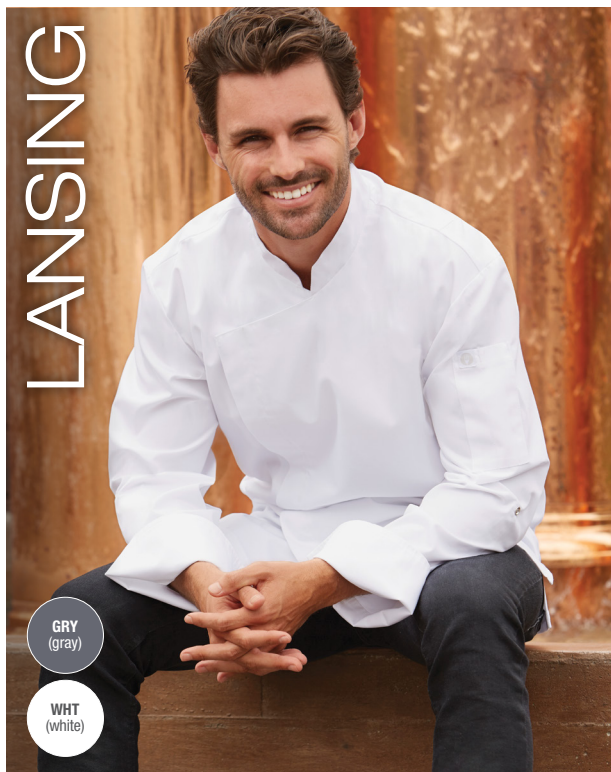
NANTES

RED  
(red)

6.2 oz. 65/35 poly/cotton, long-sleeve, turn-back cuffs, matching buttons, left chest patch & thermometer pockets  
Available in RED



CF 1 REPC | XS-5XL

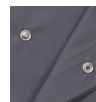


LANSING

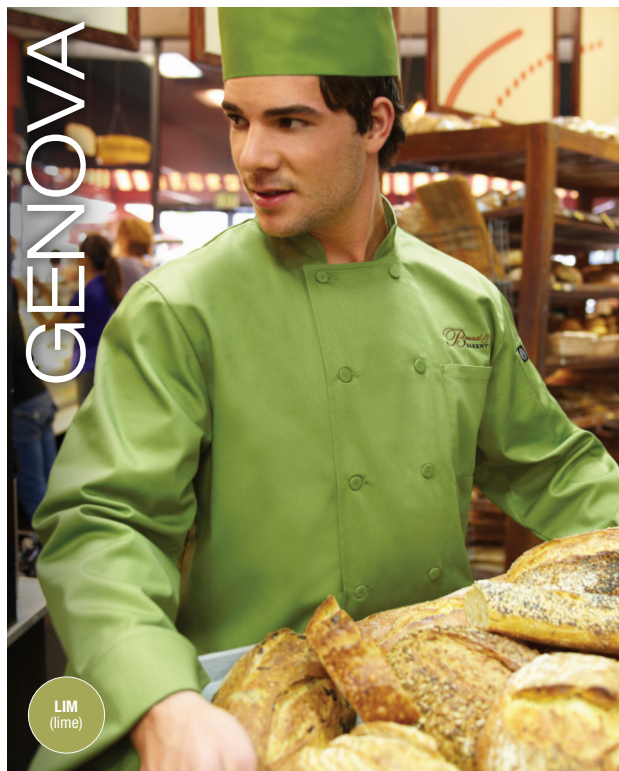
GRY  
(gray)

WHT  
(white)

4.7 oz. 65/35 poly/cotton 'lite' twill fabric, Cool Vent™ back/side roll-up long sleeve with tab, side seam slits, concealed snap front, left sleeve thermometer pocket, women's fit available (see pg 57)  
Available in GRY, WHT



CF 1 BCMC010 | XS-3XL



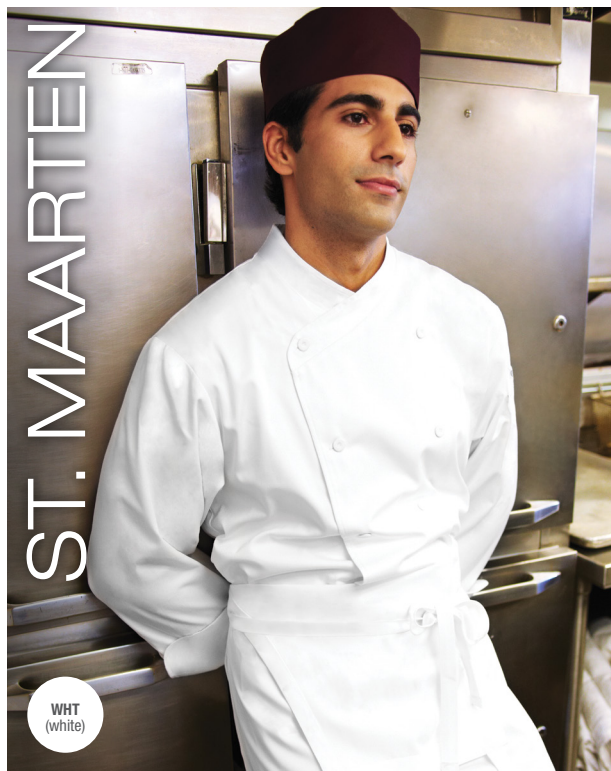
GENOVA

LIM  
(lime)

6.2 oz. 65/35 poly/cotton, long-sleeve turn-back cuffs, cloth-covered buttons, left chest patch & thermometer pockets  
Available in LIM



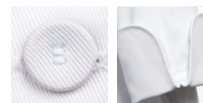
CF 1 2833 | XS-5XL



ST. MAARTEN

WHT  
(white)

6.2 oz. 65/35 poly/cotton, french cuffs, cross-over collar, cloth-covered buttons, thermometer pocket  
Available in WHT



GF 1 COCC | XS-5XL